

Conditions of the Club

Visitors and non-members are welcome.

Regular walkers will be required to join the club.

Annual subscription £5.00. School children free.

Car drivers and passengers are expected to share travelling costs.

NB. Drivers accepting payment should check that this is allowed under the terms of their motor insurance policy.

The leader of the walk will carry the first aid kit.

Dogs are not allowed on the club walks.

All walkers are responsible for their own safety and accept that they take part in walks at their own risk.

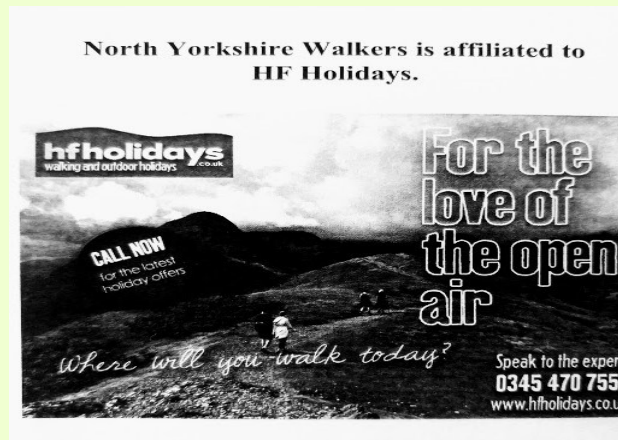
They should however:

- * Follow the walk leader's instructions.
- * Observe the Countryside Code.
- * Wear suitable footwear and clothing.
- * Carry spare clothing, food & safety equipment appropriate for the walk.

Please inform the walk leader of your intention to attend a walk. If no phone number is given, please contact the Walks Secretary or the Club Secretary. Thank you.

Club Secretary: Christine Clarke 07484 635390

Walks Secretary: Claire Hill 07938 998809



Walk classification

- A. Fairly flat, few stiles, leisurely pace.
- B. Some ascent/descent, short & steep or long but less steep, uneven terrain.
- C. Some steep ascent, uneven terrain.

NORTH YORKSHIRE WALKERS

www.northyorkshirewalkers.co.uk

Walking Programme July and August 2021



Sunday 4th July 2021 **5 miles** **B**

Leader: Annie Hesketh & Claire Hill 07938 998809

A circular walk up to Great Ayton Moor, Roseberry Topping and Captain Cooks Monument. Includes 2 steep ascents .

Start: 10.00

Park at Gribdale Gate Car Park Grid ref: NZ592110

Sunday 11th July 2021 **6 miles** **A**

Leader: Derek Hutchinson.

From Coxwold village to High Kilburn. Not very hilly.

Start: 10.00

Village hall CP located at north end of the village along the road to Byland. Post code: YO61 4BB. what3words: turns.losing.plugged.Public toilets and an Honesty Box.

Sunday 18th July 2021 **9.3 miles** **B**

Leader: Claire Hill 07938 998809

Yockenthwaite & Hubberholme from Buckden via Cray, returning along the Dales Way. Some moderate ascents, tracks, short road stretches and fields. Public toilets.

Start: 10.00

Bucken CP—Pay & Display (£4.80) Grid Ref: SD942773. what3words: bars.bumping.squirts Public toilets.

Sunday 25th July 2021 **5 miles** **A**

Leader: Teresa Quinn 01748 818946

Start: 10.00

A circular walk from The Cover Bridge Inn at East Witton, along the river to Middleham, a descent to Hullo Bridge and across fields to return. There are a number of easy stiles and no ascents.

Park at the Inn car park—car sharing wherever possible please. Grid Ref: SE145860 Post code: DL8 4SQ

Sunday 1st August 2021 **5 miles** **A**

Leader: Sue Flanigan

Flat walk from Ripon Canal to Bishop Monkton & back through Littlethorpe.

Start: 10.00

Canal car park on Boroughbridge Road behind Lock House Grid ref: SE323704.

Sunday 8th August 2021 **5 miles** **A**

Leader: Christine Clark 07484 635390

A walk with a couple of ascents and descents— along part of the Cleveland Way, taking in Old Byland, Dick Wood & Low Gill.

Start: 10.00 but arrive by 09.30 to secure parking place.

Parking area by Bridge Road on the left—before reaching Rievaulx village. Grid Ref: SE564846 what3words: inclined.homecare.ramble

Sunday 15th August 2021 **6 miles** **B**

Leader: Jess Stayniak/Susan Ferla

A circular walk around Hawnby—on woodland and field paths with some ascents and passing the 17th Century Arden Hall with stunning views down into Thorodale

Start: 10.00

Park at Hawnby Village Hall opposite the tea room. Grid ref: SE542893

Sunday 22nd August 2021 **8.5 miles** **B**

Leader: Colin Elcock

Circular walk up onto Urra Moor via back track, then heading up to Round Hill trig point—onto Chop Gate but staying on the edge of the moor back to the car park.

Start: 09.45 Park at Clay Bank NY Moors CP TS9 7HY. Grid ref: NZ572035. what3words: chair.hurt.carpentry

Sunday 29th August 2021 **9.5 miles** **B**

Leader: Derek Hutchinson

A circular walk from Middleham over fields and riverside paths with some ascents, descents, stiles and rough terrain.

Start: 10.00

Park in Middleham High Street, western end near to the castle. Grid Ref: SE126876