

Conditions of the Club

Visitors and non-members are welcome.

Regular walkers will be required to join the club.

Annual subscription £5.00. School children free.

Car drivers and passengers are expected to share travelling costs.

NB. Drivers accepting payment should check that this is allowed under the terms of their motor insurance policy.

The leader of the walk will carry the first aid kit.

Dogs are not allowed on the club walks.

All walkers are responsible for their own safety and accept that they take part in walks at their own risk.

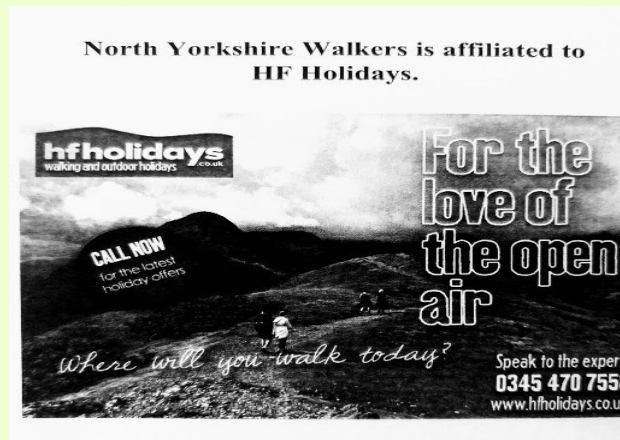
They should however:

- * Follow the walk leader's instructions.
- * Observe the Countryside Code.
- * Wear suitable footwear and clothing.
- * Carry spare clothing, food & safety equipment appropriate for the walk.

It will be the walk leader's responsibility to contact you should the walk need to be cancelled for whatever reason — hence, **it is essential that you inform the walk leader of your intention to attend and to provide them with your contact number.** If there is no telephone number given for the walk leader, please contact either Claire or Christine—see contact details below.

Club Secretary: Christine Clarke 07484 635390

Walks Secretary: Claire Hill 07938 998809



Walk classification

Easy: Flat or undulating terrain, a few stiles.

Moderate: Ascents/descents, short & steep or long & gradual, uneven terrain and likely to include stiles.

Difficult: Likely to include challenging ascents & descents, uneven terrain and stiles. Strenuous.

NORTH YORKSHIRE WALKERS

www.northyorkshirewalkers.co.uk

Walking Programme September and October 2022



Sunday 4th Sept 2022 Moderate 7mls

Walk Leader: Annie Hesketh 07796 303443

Ellerbeck to Kirby Sigston. Gentle ascents and descents. 1 or 2 gates and stiles.

Start: 10.00

Parking on wide grass verge at the junction to West Harlsey
What3words texts.cookbooks.warping

Sunday 11th Sept 2022 Easy 7mls

Walk Leader: Jess Stajniak 07736 371355

From Ampleforth around the lakes to Gilling East then back towards the Abbey to follow the nature trail. Fields & farm tracks

Start: 10.00

Please, park at the bottom of the White Swan pub car park in Ampleforth. Post Code YO62 4DA

Sunday 18th Sept 2022 Easy 7.5mls

Walk Leader: Sue Flanigan & Jean Leonard 07564 322195

To Scackleton & Skewsby over field and farm tracks. Easy ascents & descents.

Start: 10.00

Parking at City of Troy Maze . What3Words:
solar.thrillers.repeated.

Sunday 25th Sept 2022 Moderate 6mls

Walk Leader: Jo Fauvet 01845 526704/07747 359420

Swainby Scugdale circular. Varied walk along field and woodlands paths. With a lot of ups and downs and a few styles. Part of the Cleveland Way with good views. Coffee at the Rusty Bike at finish.

Start: 10.00

Parking on village street, meet near church What3Words:
fired.range.euphoric

Sunday 2nd Oct 2022 Easy 10mls

Walk Leader: Derek Hutchinson 01609 775642

From Ripon. Field paths, some quiet roads, riverside paths through Ripon.

Start: 09.30

Parking in canal car park on B6265 towards racecourse. Grid ref: SE324704

Sunday 9th Oct 2022

No Walk available

Sunday 16th Oct 2022 Easy 8mls

Walk Leader: Sue Flanigan 07564 322195

A circular walk from Bedale over fields, tracks and roads to Firby and Snape. Flat walk with one or two stiles.

Start: 10.00

Parking at the auction mart behind Darwins Auctioneers on Bridge Street, Bedale. 3 Words: stresses.glosses.meanwhile

Sunday 23rd Oct 2022 Easy 7.5 mls

Walk Leader: Derek Hutchinson 01609 775642

Riverside field paths.

Start: 09.30

Park at Masham market place near the church

Sunday 30th Oct 2022 Easy 6.5 mls

Walk Leader: Sue Flanigan 07564 322195

A circular walk along Beckdale and back along Ashdale. Forestry paths and field tracks. One moderate ascent.

Start: 10.00

Park at Helmsley Castle car park. Pay and Display. Some free parking in town. Nearest Post Code: YO62 5AB